

# mDP-F-M-V1A

## 1. Description:

mDP-F-M-V1A is a simple mini Displayport Female to mini Displayport Male pass-through adapter breakout board. It brings all 20 pins of a mini Displayport Female and a mini Displayport Male connector to screw terminal blocks and headers for easy testing, prototyping and breadboard connection. All 20 pins of the Female connector directly connect to the Male connector. User can also use the two 10 pin headers on both sides of the breakout board to connect to breadboard or prototype PCB.

## 2. Features:

- All 20 pins of a mini Displayport Female and a mini Displayport Male connector brought out to headers and screw terminal blocks
- All 20pins of a mini Displayport Female connector directly connect to a mini Displayport Male connector.
- Various connecting method chosen by users.
- 1.0"(25.4mm)X1.0"(25.4mm) board dimensions

## 3. Parts:

- 1) 1pc X mDP-F-M-V1A PCB
- 2) 1pc X mini Displayport Female Connector
- 3) 1pc X mini Displayport Male Connector
- 4) 2pc X 10pin 0.1"(2.54mm) spacing terminal block
- 5) 1pc X 20pin 0.1"(2.54mm) header

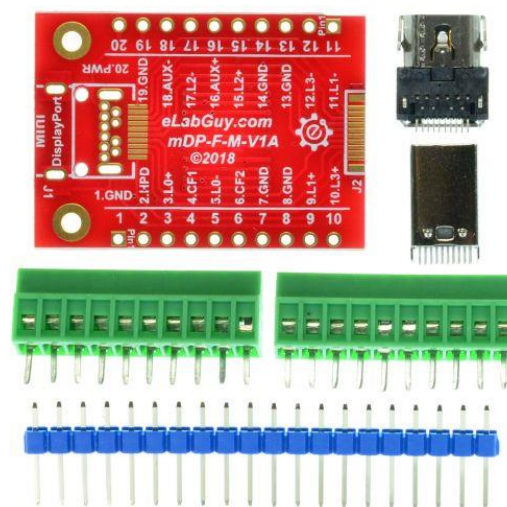


Figure 1: Parts inside the kit  
(Note: the module is not assembled, user can decide which connector to use on the module.)

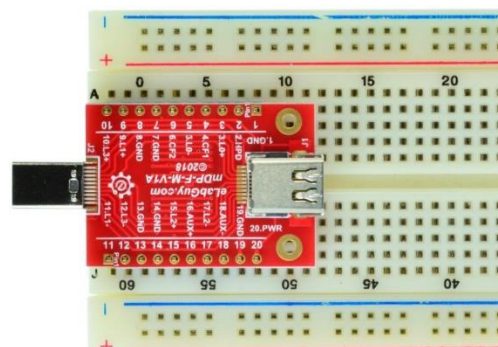


Figure 2: Example of connecting the mDP-F-M-V1A on a proto PCB (Note: This picture only shows the pins spacing, actual use may not be used on a breadboard)



Figure 3: mDP-F-M-V1A with headers

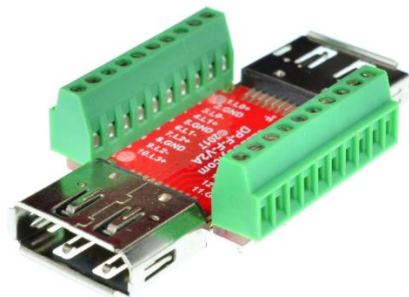


Figure 4: mDP-F-M-V1A with terminal blocks

## Related products from eLabGuy:



**DP-F-F-V2A**



**DP-F-F-V2A**